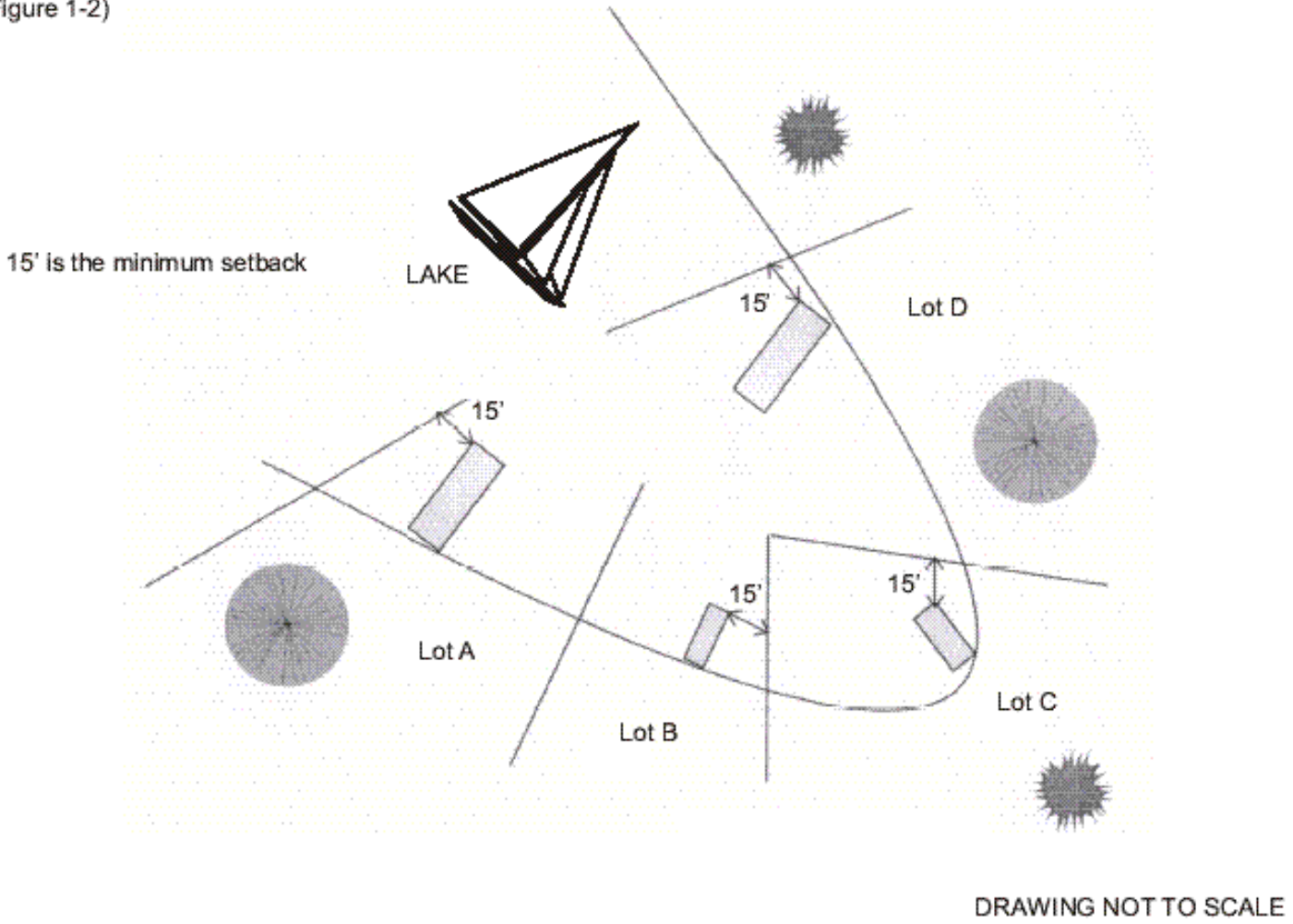


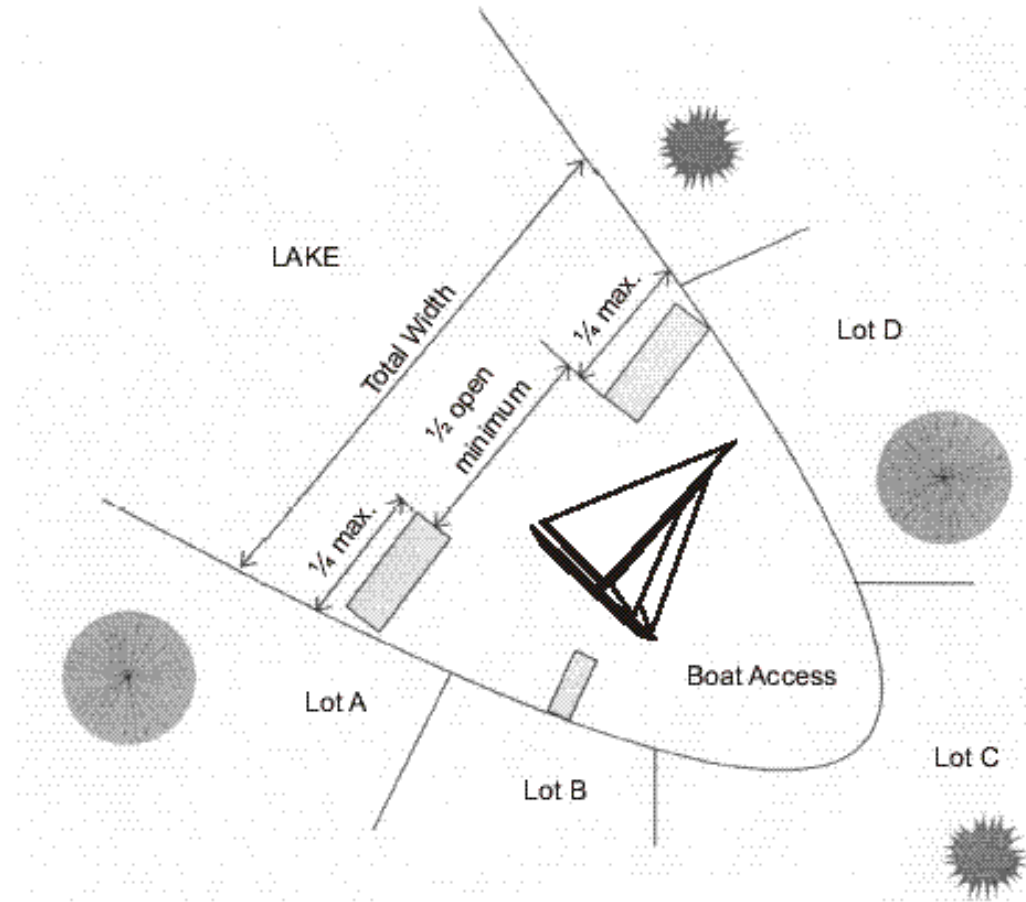
Extended property lines and 15' setback

EXTENDED LOT LINES AND SETBACKS
PRIVATE DOCK FACILITIES
(Figure 1-2)



1/4 Channel Requirement

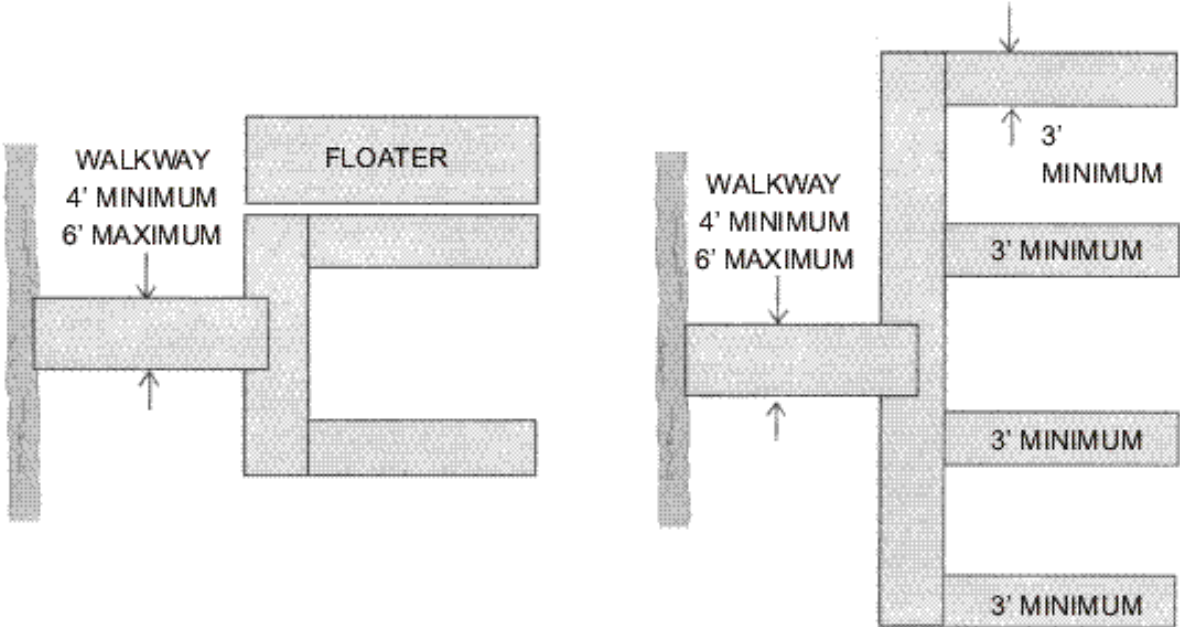
OPEN CHANNEL REQUIREMENTS
(Figure 1-3)



DRAWING NOT TO SCALE

Walkway Widths

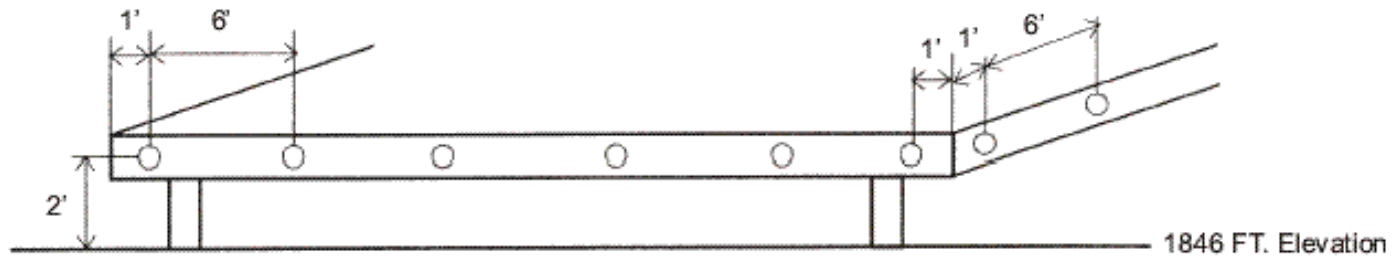
WALKWAY WIDTH REQUIREMENTS
(Figure 1-4)



DRAWING NOT TO SCALE

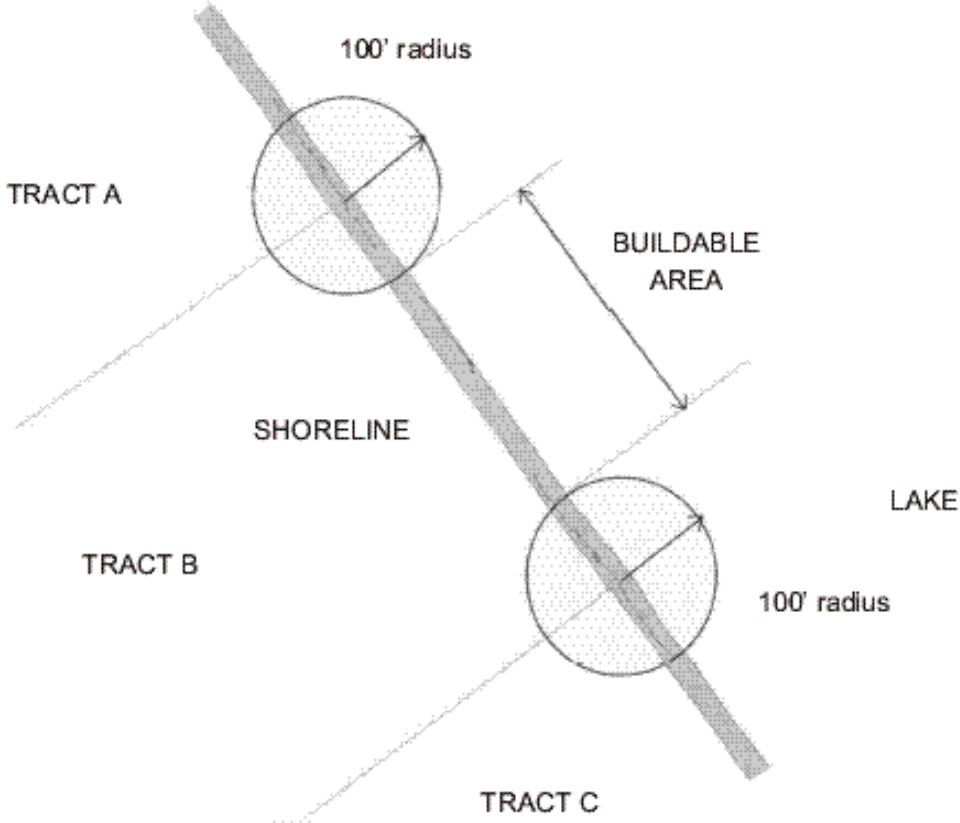
Reflector Placement

REFLECTOR PLACEMENT ON DOCKS
(Figure 1-5)



Commercial Setbacks

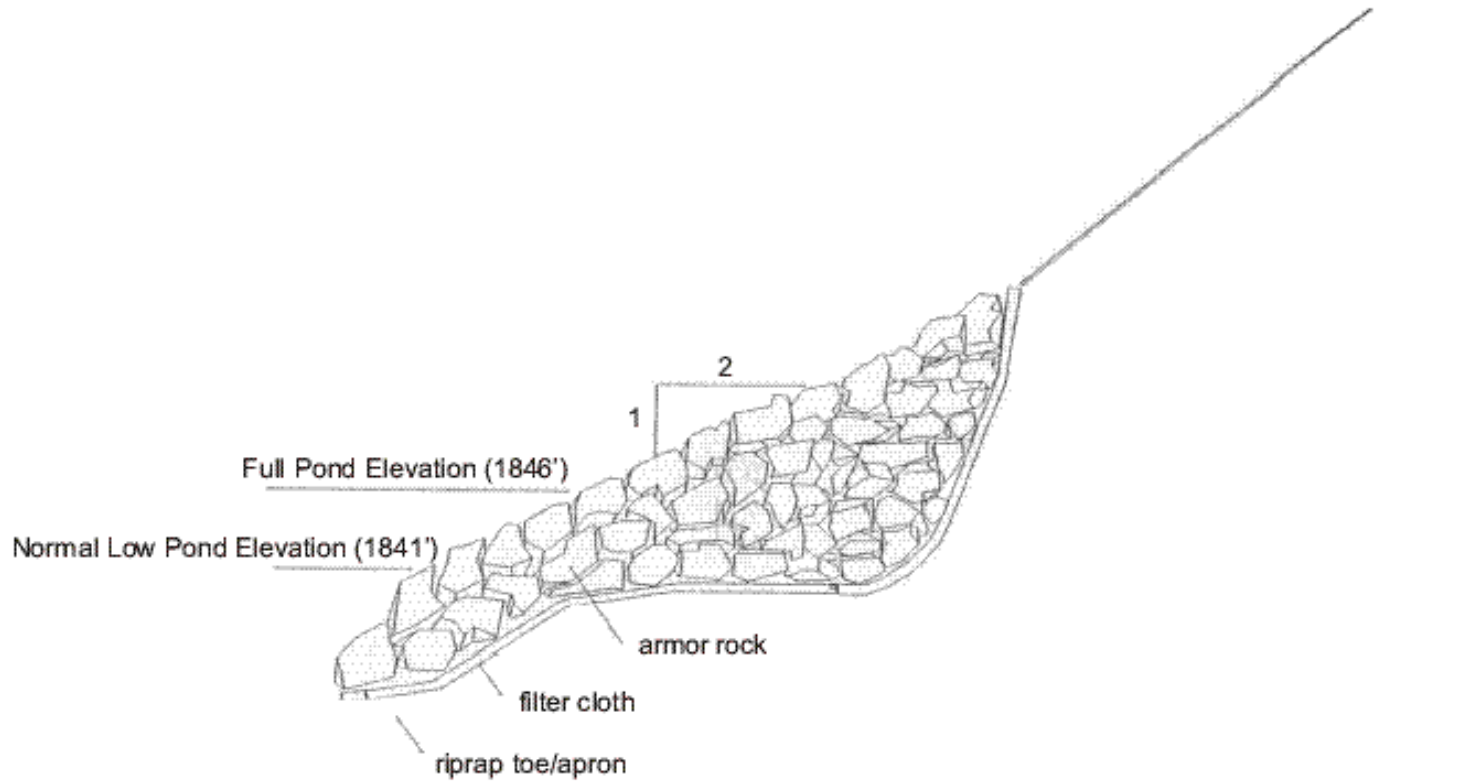
MAXIMUM POTENTIAL BUILDABLE AREA FOR COMMERCIAL FACILITIES
(Figure 1-6)



DRAWING NOT TO SCALE

Riprap

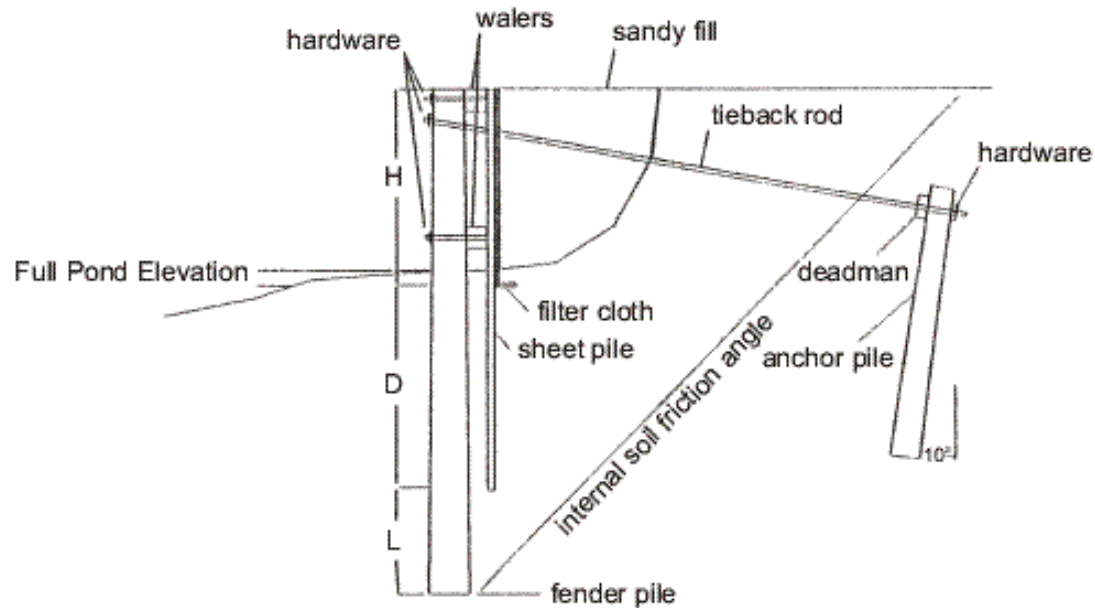
REPRESENTATIVE CROSS SECTION
RIPRAP WEDGE FOR ERODING BANK
(Figure 1-7)



DRAWING NOT TO SCALE

Bulkheads

REPRESENTATIVE CROSS SECTION BULKHEAD
(Figure 1-9)



NOTES

H =	Height of sheet pile above full pond elevation	a.	All Hardware (bolts, nuts, washers, etc.) shall be galvanized.
D =	Depth of sheet pile below normal low pond elevation (D should be equal to or greater the H)	b.	Large end of all piles should go into ground.
L =	Represents the difference in length between the sheet and fender piles (minimum of 2 to 4 feet)	c.	All wood should be pressure-treated to a minimum of 1.0 lbs/3 ft. of CCA.
		d.	In general, the length of the tieback rod should be equal to or greater than the length of the sheet pile.
		e.	Filter cloth should extend to at least normal low pool.
		f.	Fill should be free of debris and a good quality, sand soil.

DRAWING NOT TO SCALE